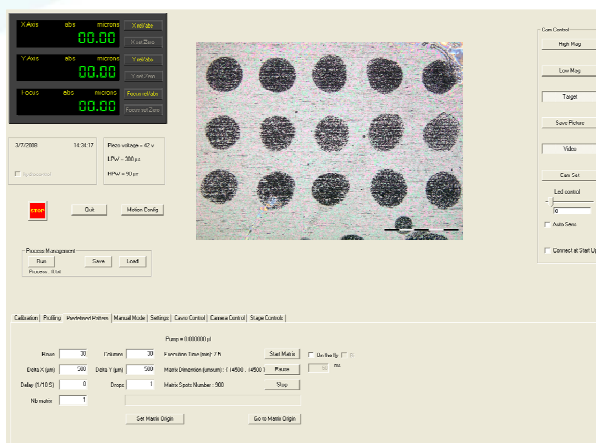


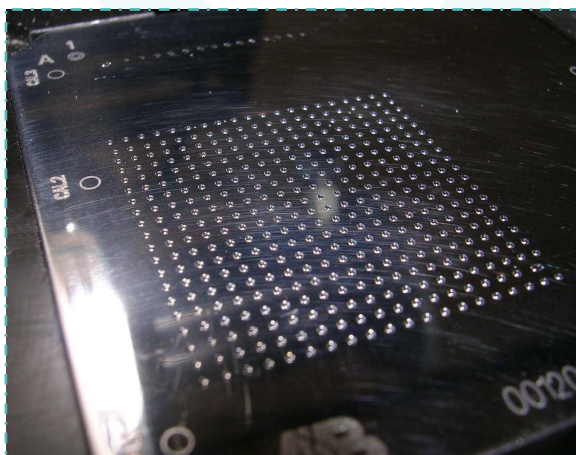
SILIFLOW® Sputnik is a platform dedicated to sample preparation for **Maldi MS tissue imaging**. Based on a piezoelectric spotting technology, it delivers the right amount of liquid (**enzyme, matrix,...**) at the right place.



◆ System overview

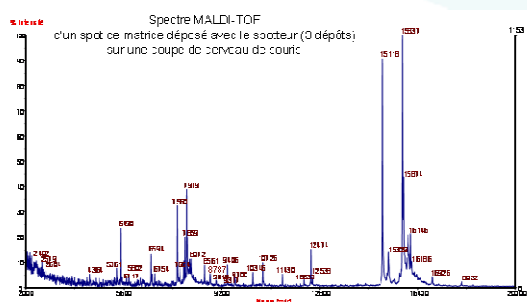
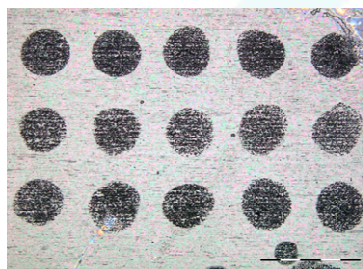
We have developed a versatile tool to handle your tissue sample from the cryostat to the mass spectrometer. It integrates a microscope, the environment control devices and the non-contact nanoliter dispensing head for **in situ digestion** and **matrix deposition**.

The **SILIFLOW® patented dispensing head** is the core of the system. It can jet droplets of most biofluids and most commonly used matrix solutions with a good accuracy and a good reproducibility. The spot size are a few hundredth of micron in diameter, depending on liquid affinity with the tissue.

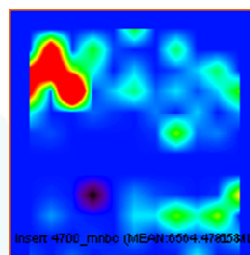


2 ways to use Splotnik

- 1) **Profiling mode** : With the microscope, you select the regions of interest where the liquid is to be spotted. It is as simple as a couple of mouse clicks. Then Splotnik will automatically load the enzyme or the matrix and spot the small droplets as many times as needed on the selected locations.
- 2) **Imaging mode** : A rectangle area and a spot density are defined. Then, Splotnik will follow the same procedure as indicated above on all the area, leading to a consequent number of spots for a whole tissue sample analysis.



Courtesy of ICSN, Gif/Yvette, France



Main features :

- XYZ motion, PC controlled via USB port
- Resolution : 0.5 μm
- Repeatability : +/- 5 μm
- Working area : 126 x 76 (mm)
- Dimensions : L 315 x P 390 x H 450 (mm)
- Joystick for easy sample positioning.
- Hygrometry regulation.
- Export of spot coordinates to MS
- 1,3 Mp CCD camera and microscope optical system with zoom (wide field 6,3 x 8,5 mm ; narrow field 0,9 x 1,2 mm).

